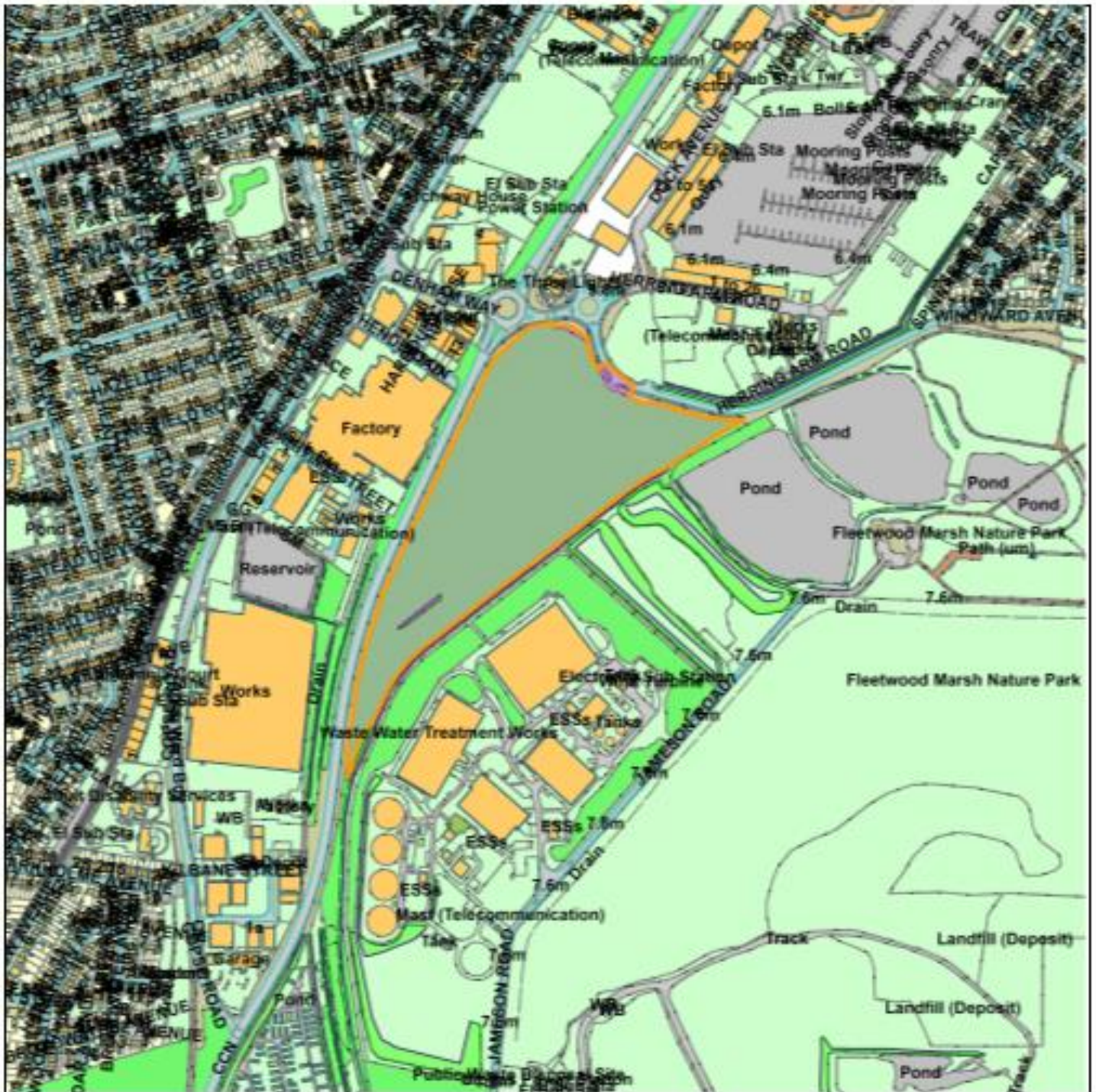


Planning Committee

22/00774/FULMAJ - Land South of Winward Avenue and East of Amounderne



Scale : 1:7485

Reproduced from the Ordnance Survey map with the permission of the Controller of Her Majesty's Stationery Office © Crown Copyright 2012.

Unauthorized reproduction infringes Crown Copyright and may lead to prosecution or civil proceedings.

Organisation	Wyre Council
Department	Planning Department
Comments	Item 5
Date	21 August 2023
SLA Number	100018720